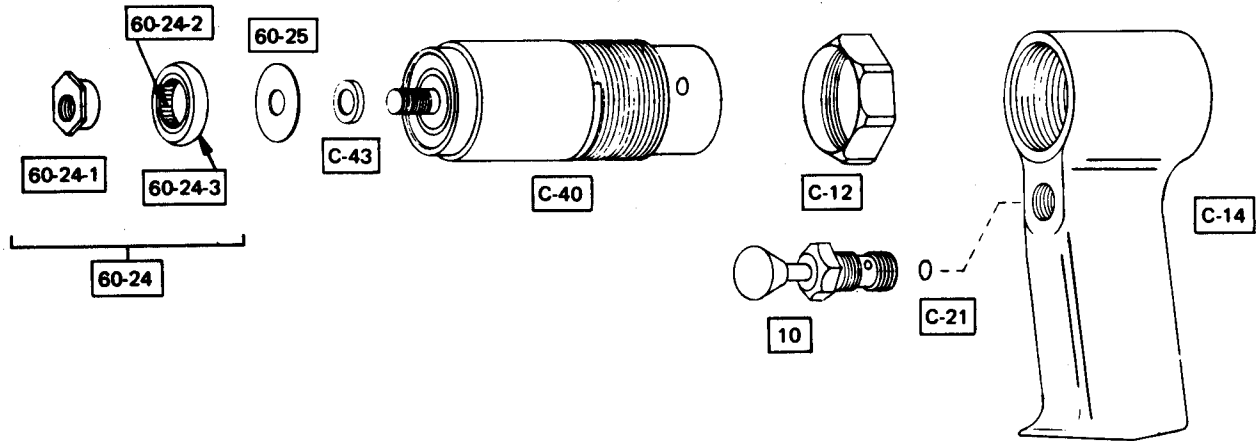




# Pneumatic Scissor Shears PARTS LIST

253-28



**CAUTION: KEEP HANDS AWAY FROM THE CUTTING BLADES AT ALL TIMES TO AVOID SERIOUS INJURY.**

### Operating instructions

Read Safety Rules carefully. The Kett Scissor Shear is recommended for cutting non-metallic materials such as wood slat curtains, rugs, rug pads of all types, linoleum, vinyl and rubber flooring tile, soft plastic sheet up to 1/8" thickness, and other similar materials. The shear head can be rotated a full 360 degrees on the power unit when it is desirable to change its position because of close corners or when the stationary blade is preferred either on top or bottom of the cut.

### Loss of power or erratic action

If resistance to tool develops or cutting becomes difficult, discontinue cutting and check the following: lubrication; thickness of material; sharpness of cutting blades; air pressure.

Check for low air pressure or air line restrictions, also reduced compressor output or excessive drain on air lines.

Dirt and gum deposits in tool may cause loss of power and may be removed by flushing tool with a gum solvent oil.

For maximum efficiency, 100 psi of clean, dry air should be supplied at the tool during operation. Use of one horsepower or larger compressor connected to an air tank of at least 40 gallons capacity is recommended.

Pipe and fittings between compressor and air hose outlets should be 1/2" pipe size (5/8" ID). Air hose should be at least 3/8" ID.

### Lubrication

Daily before using, pour a liberal quantity of gum solvent oil into air inlet and run tool to allow dirt and gum accumulations to be flushed out the exhaust.

Part Number	Description
60-24	Eccentric Bearing Assembly (Incl. Hex. Eccentric, Outer Ring and Needle Bearing)
60-24-1	Eccentric Bushing (Hex Head)
60-24-2	Eccentric Needle Bearing
60-24-3	Eccentric Outer Ring
60-25	Thin Washer, Large
C-12	Lock Nut
C-14	Handle
C-21	"O" Ring
C-40	Motor Unit Complete
C-43	Washer
10	Trigger Valve
253-28	Pneumatic Power Unit
C-40-R	Replacement C-40 Motor with trade in of your defective motor

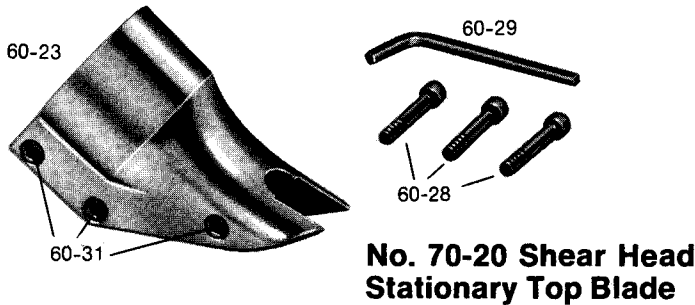


**WARRANTY DOES NOT APPLY IF UNIT IS NOT PROPERLY LUBRICATED**

**Scissor Shear Head**  
(see reverse side of sheet)



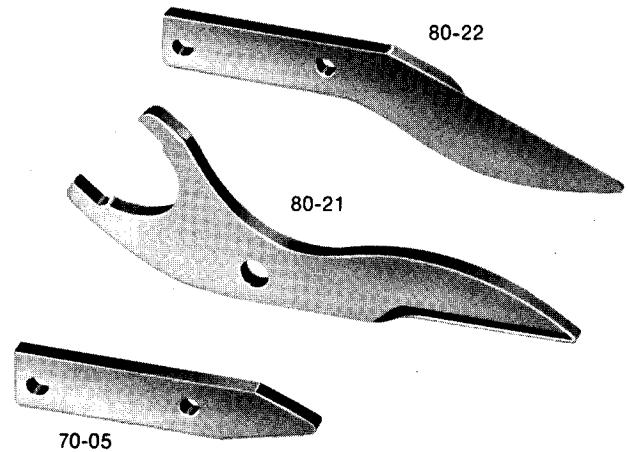
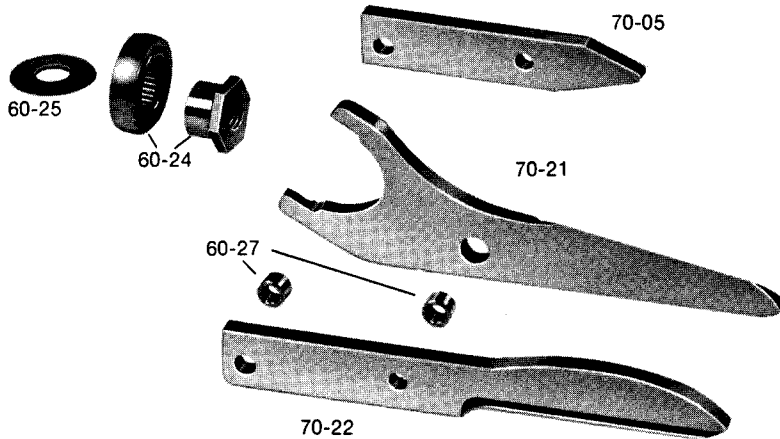
# Instructions for the Care of the Kett Scissor Shears Head



**No. 70-20 Shear Head Stationary Top Blade**

**CAUTION:**  
Disconnect Power Unit Before Servicing Tool

**No. 80-20 Shear Head Stationary Bottom Blade**



## DISASSEMBLY

To remove shear head from motor loosen three cap screws (60-28). Remove shear head from motor by pulling head firmly forward. Slight twisting action may be required if head does not slide off easily.

To remove cutter blades from shear head remove three cap screws (60-28) completely from shear housing (60-23). Be careful not to lose rear spacer bushing (60-27) when removing middle cap screw. Remove center scissor blade from shear housing by tapping blade gently rearward. Be careful not to lose spacer bushing (60-27) from hole in center blade. Side knife and side spacer (70-05) will now drop out of the shear housing.

To remove eccentric bearing assembly (60-24) from shaft use an appropriate wrench to loosen eccentric nut by turning counter clockwise.

## ASSEMBLY

To install eccentric bearing assembly (60-24) onto shaft make sure the large thin washer (60-25) is first inserted over shaft. Screw eccentric bearing assembly onto shaft and tighten with appropriate wrench. Lubricate bearing with a good grade of bearing grease.

To install cutter blades into shear housing (60-23) place the side knife and side spacer into position in the shear housing (60-23). Insert center cap screw (60-28) through side knife and side spacer with rear spacer bushing (60-27) between them and start cap screw into thread just enough to hold blades in place. DO NOT TIGHTEN. Insert spacer bushing (60-27) into hole in center scissor blade and lubricate with a good grade of bearing grease. Install center scissor blade into shear housing by tapping blade gently forward using a drift to line up hole in center blade with forward holes in housing. Insert and tighten forward

60-23	Shear Housing
60-24	Eccentric Bearing Assembly
60-25	Thin Washer, Large
60-27	Spacer Bushing (2)
60-28	Cap Screw (3)
60-29	Allen Wrench
60-31	Knurled Insert (3)
70-05	Side Spacer
70-21	Center Scissor Blade
70-22	Side Knife
80-21	Center Scissor Blade
80-22	Side Knife

cap screw (60-28) making sure spacer bushing (60-27) in center blade stays in position. Apply good grade of bearing grease to clevis or yoke in center blade where it rides on the eccentric bearing assembly. Insert rear cap screw (60-28) into shear housing but do not completely tighten.

To install shear head assembly onto drive motor make sure all cap screws (60-28) are loosened about three or four complete turns. Place shear head onto unit and tighten cap screws snugly to lock head assembly in place. It may be necessary to gently tap the shear head into place if it does not readily slip onto the nose of the power unit.

## SPECIAL SIDE KNIVES

For cutting woven wood or other rigid slat type materials side knives are available that do not have the wiping action of the standard Scissor Shears. These are: 75-22 Side Knife transforming the 70-20 Shear Head into the 75-20 Shear Head and the 85-22 Side Knife transforming the 80-20 Shear Head into the 85-20 Shear Head.