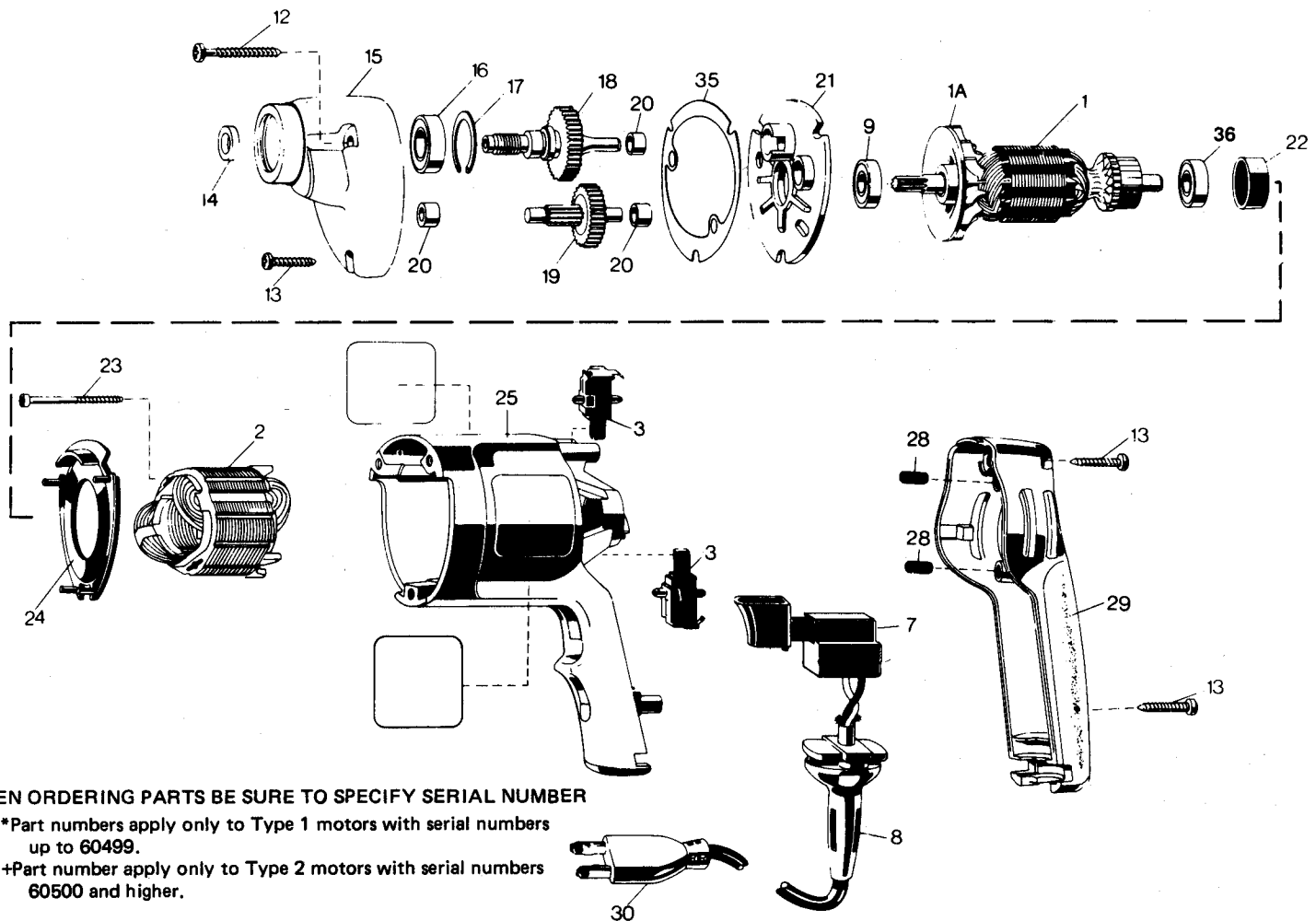




# Model K-100 Electric Shear PARTS LIST



WHEN ORDERING PARTS BE SURE TO SPECIFY SERIAL NUMBER

\*Part numbers apply only to Type 1 motors with serial numbers up to 60499.

+Part number apply only to Type 2 motors with serial numbers 60500 and higher.

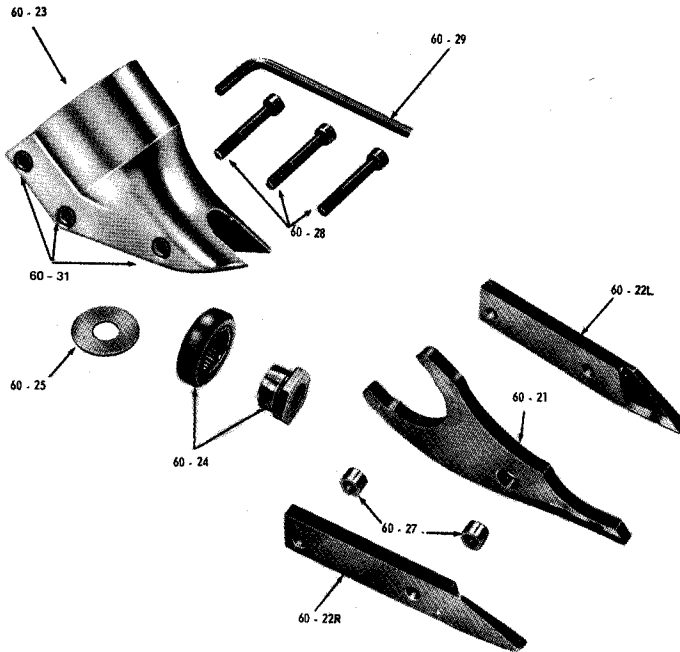
## PARTS IDENTIFICATION

| ITEM NO. | PART NO.   | DESCRIPTION                              | ITEM NO. | PART NO.  | DESCRIPTION                     |
|----------|------------|--|----------|-----------|---------------------------------|
| 1        | *133555-31 | Armature & Fan (Incl. 1A)                | 20       | 131557    | Sleeve Bearing                  |
|          | +447016-31 | Armature & Fan (Incl. 1A)                | 21       | 132335    | Gear Case Cover (Incl. 20)      |
| 1A       | 93090-03   | Fan                                      | 22       | 132332    | Rubber Sleeve                   |
| 2        | 132345-71  | Field                                    | 23       | 91302     | 8-16 x 1 1/4 Thd. Forming Screw |
| 3        | 132812     | Brush & Holder Assembly                  | 24       | 131558    | Fan Baffle                      |
| 7        | 95046      | Switch                                   | 25       | 131553-03 | Field Case (Incl. 27)           |
| 8        | 132768-98  | Cord & Plug (Incl. 30)<br>(18-2 SJT 10') | 28       | 30612     | Rubber Plug                     |
| 9        | 52029-01   | Ball Bearing                             | 29       | 131657-01 | Switch Handle                   |
| 12       | 95048      | 8-16 x 1 1/2 Thd. Forming Screw          | 30       | 133350    | Plug                            |
| 13       | 87184      | 8-16 x 15/16 Thd. Forming Screw          | 35       | 400004    | Gasket                          |
| 14       | 132809     | Spacer                                   | 36       | 400286    | Ball Bearing                    |
| 15       | 132697-01  | Gear Case (Incl. 20)                     |          |           |                                 |
| 16       | 49423-01   | Ball Bearing                             |          |           |                                 |
| 17       | 87692      | Retaining Ring                           |          |           |                                 |
| 18       | *132807-01 | Spindle & Gear                           |          |           |                                 |
|          | +445352    | Spindle & Gear                           |          |           |                                 |
| 19       | *132323    | Inter. Pinion & Gear                     |          |           |                                 |
|          | +445276-01 | Inter Pinion & Gear                      |          |           |                                 |

### NOTES:

- 9 Shield side toward fan
- 29 Be sure that handle has the two rubber plugs (No. 30612) inserted into it before assembly.

# INSTRUCTIONS FOR DISASSEMBLY AND ASSEMBLY OF SHEAR HEAD NO. 60-20



## ADJUSTMENT

To adjust the curl of waste material, the left side knife (60-22L) has elongated holes. Adjustment may be necessary after changing blades or material being cut. Loosen cap screws (60-28) and tap side knife (60-22L) either forward or backward so that curl of waste does not hit shear housing (60-23) or work material while cutting.

## DISASSEMBLY

To remove shear head assembly (60-20) from drive motor:

1. Loosen both rearward cap screws (60-28) three or four complete turns.
2. Remove shear head assembly (60-20) from motor by pulling head firmly forward. Slight twisting action may be required if head does not remove easily.

To remove cutter blades from shear head assembly (60-20):

1. Remove three cap screws (60-28) completely from shear housing (60-23). **Be careful not to lose rear spacer bushing (60-27) when removing rear cap screw.**
2. Remove center blade (60-21) from shear housing (60-23) by tapping blade gently rearward. **Be careful not to lose spacer bushing (60-27) from hole in center blade.**
3. Side knives (60-22L and 60-22R) will now drop out of shear housing.

To remove eccentric bearing assembly (60-24) from shaft:

1. Hold output shaft with wrench to prevent it from turning when removing eccentric nut. Flat areas are provided on the end of the shaft for this purpose.
2. Use an appropriate wrench to loosen eccentric nut by turning counter clockwise.

## ASSEMBLY

To install eccentric bearing assembly (60-24) onto shaft:

1. Make sure small thick washer (132809) and large thin washer (60-25) are inserted over shaft. Small thick washer (132809) must be put on shaft first.
2. Turn eccentric bearing assembly onto shaft and tighten with appropriate wrench. Lubricate bearing with a good grade of bearing grease.

To install cutter blades into shear housing (60-23):

1. Place the left side knife (60-22L) into position in the shear housing (60-23).
2. Insert center cap screw (60-28) through housing and blade just far enough to slip spacer bushing (60-27) over cap screw.
3. Place right side knife (60-22R) into position and push center cap screw through right side knife. Start cap screw into thread just enough to hold blades in place. **DO NOT TIGHTEN.**
4. Insert spacer bushing (60-27) into hole in center blade (60-21) and lubricate with a good grade of bearing grease.
5. Install center blade (60-21) into shear housing (60-23) by tapping blade gently forward using a drift to line up hole in center blade with forward holes in housing.
6. Insert and tighten forward cap screw (60-28) making sure spacer bushing (60-27) in center blade stays in position. Apply good grade of bearing grease to clevis in center blade.
7. Insert rear cap screw (60-28) into shear housing (60-23) but do not completely tighten.

To install shear head assembly (60-20) onto drive motor:

1. Make sure rear cap screw and center cap screw (60-28) are loosened about three or four complete turns.
2. Place shear head onto unit and tighten cap screws (60-28) snugly to lock head assembly in place. It may be necessary to gently tap the shear head assembly into place if it does not readily slip onto the drive motor.

**WARNING: THE KETT TOOL CO. CANNOT ASSUME RESPONSIBILITY FOR DAMAGE TO OR MALFUNCTION OF A KETT SHEAR HEAD USED IN COMBINATION WITH ANY DRILL OR PARTS OTHER THAN THOSE REGULARLY SUPPLIED BY US. USE ONLY KETT REPLACEMENT BLADES EMBOSSED WITH PART NUMBERS 60-21, 60-22L OR 60-22R.**

**NOTE: WHEN SHEAR HEAD IS PROPERLY ASSEMBLED THE CENTER BLADE WILL MOVE FREELY IN HEAD.**